



Marion Employee Profile Rusty Sewell

For the last seven years, Rusty has enlivened the Geology Department's daily routine. His quick wit and positive outlook transform even the most mundane projects.

In spite of this light touch, he takes a scholarly approach to environmental challenges. He is a conscientious professional who never misses a deadline and excels guiding clients through every phase of any project.

Every year he is the highlight of our Christmas party, strumming a mandolin and singing an original song that is a parody of fellow employees. Notwithstanding this performance, Rusty is a multi-talented member of our consulting department.

Marion Environmental Inc. is one of the leading providers of environmental consulting, remediation, and emergency response in the southeast. Our goal is to provide cost effective solutions to environmental problems. Making *our* standard, industry standard.

STREAM RESTORATION



MEI partners with great clients in Tennessee and throughout the Southeast, who need Emergency Response, Industrial Clean Up or Environmental Remediation Services and we are willing to travel where our valued partnerships lead us. Remediation and restoration of streams and wetlands is a rapidly growing service line for MEI. Our boots on the ground experience ensures the constructability of a project from the planning stages. Projects are designed, constructed accurately, quickly and within budget.

MEI Stream Restoration Services include, but are not limited to:

Streams

- Stream Restoration / Relocation
- Stream Bank / Slope Stabilization
- Riparian Enhancement / Stabilization
- Erosion Monitoring & Assessment
- Sediment Sampling, Characterization & Removal
- Floodplain Restoration & Monitoring

MARION ENVIRONMENTAL, INC.

115 Parmenas Lane
Chattanooga, TN 37405
423-499-4919 Office • 423-892-5122 fax
www.marionenv.com



CREEK RESTORATION Continued



Wetlands

- Wetland Restoration / Enhancement
- Wetland Creation

Other Services

- Mechanical & Hydraulic Dredging
- Sediment Washing
- Lagoon Maintenance & Closures
- Conceptual Restoration
- Shoreline Enhancement / Stabilization
- Headwalls & Weir Gate Construction

Safety Tip

Lone Worker Safety

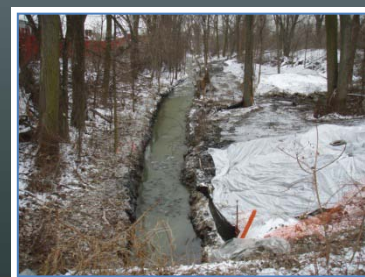
A lone worker is defined as a worker who cannot be seen or heard by another person, and cannot expect a visit from another employee. To help ensure the safety of a lone worker, supervisors should: always assess the hazards of the lone worker's jobsite. Does it involve working at heights? Using hazardous machinery? Avoid assigning lone work whenever possible. MEI does not like to schedule a "lone worker", but in some unique situations, it may become necessary. In those cases there should be an evaluation of any hazards. For any lone work, create a check-in procedure and an emergency action plan for when a worker does not check-in. Schedule higher-risk tasks during normal business hours, or when another worker who can help is present.



Happenings

On May 10th, MEI employees and their family members attended a Lookouts Baseball Game in Chattanooga. MEI hosts this family event each year. It is an opportunity for Marion employees to get together with their families at the game and socialize outside the office. Marion's billboard has been displayed at the Lookouts Stadium for the last six years. Marion supports many local organizations, from high school sports to the semi-professional baseball team.

MEI has several representatives heading to Texas for the AAR/BOE meeting later in May. MEI also has a booth. This meeting is informative and diverse, covering everything from tank car damage, testing, and valves, to derailments and Emergency Response scenarios.



AQUATREAT, INC.

617 Hudson Road
Chattanooga, TN 37405
423-265-0132 Office • 423-265-3665 fax
www.aquatreat.com

